



บริษัท เอดีดี เฟอร์เนส จำกัด

ADD FURNACE CO.,LTD.

44 ซอยบรมราชชนนี 70 ถนนบรมราชชนนี แขวงศาลาธรรมสพน์ เขตทวีวัฒนา กรุงเทพฯ 10170

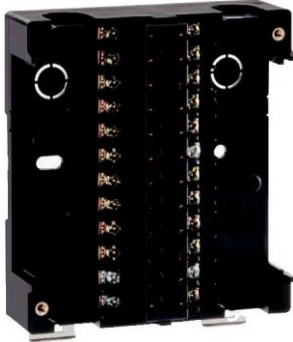
โทร: 02-888-3472 โทร.ออกแบบ(:08-08-170-170 แฟกซ์: 02-888-3258

https://www.add-furnace.com E-mail: sales@add-furnace.com



CP-UM-5730E

Dedicated sub-base for the burner controller BC-R BC-R05 User's Manual



Thank you for purchasing the BC-R05 dedicated sub-base for the BC-R burner controller. This manual contains information for ensuring the correct use of the dedicated sub-base for the BC-R. This manual should be read by those who design and maintain devices that use the BC-R Series.

Be sure to keep this manual nearby for handy reference. Please read the "Terms and Conditions" from the following URL before ordering or use:

<http://www.azbil.com/products/bi/order.html>

NOTICE

Be sure that the user receives this manual before the product is used. Copying or duplicating this user's manual in part or in whole is forbidden. The information and specifications in this manual are subject to change without notice.

Considerable effort has been made to ensure that this manual is free from inaccuracies and omissions. If you should find an error or omission, please contact the azbil Group.

In no event is Azbil Corporation liable to anyone for any indirect, special or consequential damages as a result of using this product.

© 2014 Azbil Corporation All Rights Reserved.

SAFETY PRECAUTIONS

Safety precautions are for ensuring safe and correct use of this product, and for preventing injury to the operator and other people or damage to property. You must observe these safety precautions. Also, be sure to read and understand the contents of this user's manual.



WARNING

Warnings are indicated when mishandling this product might result in death or serious injury to the user.



CAUTION

Cautions are indicated when mishandling this product might result in minor injury to the user, or physical damage to this product.

WARNING

- Ensure you turn off the power of this device and all auxiliary devices when mounting, removing or connecting the wires of this device. There is a risk of electrical shock.
- Do not touch electrically charged parts such as the power supply terminals. Doing so might result in an electric shock.
- Do not disassemble this device.

PLEASE CHECK

Model number	Product name	Quantity	Notes
BC-R05A100	Dedicated sub-base	1	
CP-UM-5730E	User manual	1	This document

OVERVIEW

This device is a dedicated sub-base for the burner controller BC-R series.

This sub-base should be mounted on a panel or the like. The controller itself is then mounted on the sub-base.

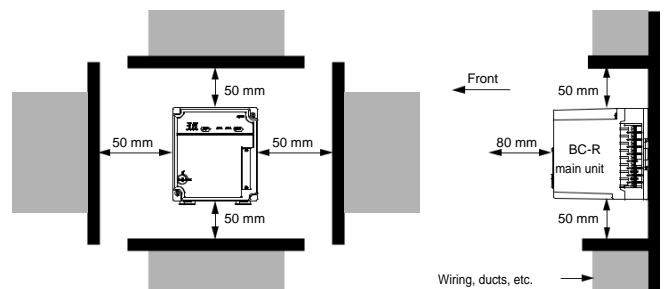
MOUNTING

CAUTION

- Mounting, wiring, maintenance, inspection, calibration, etc. should be carried out by a professional with technical training in combustion systems and flame safeguard control devices.
- Do not install where exposed to any of the following:
 - Certain chemicals or corrosive gases (ammonia, sulfur, chlorine, ethylene compounds, acids, etc.)
 - Dripping water or excessive humidity
 - High temperatures
 - Sustained long-term vibration
- For mounting and wiring, follow the instructions in this user's manual or in the combustion equipment manufacturer's manual.
- If a protective structure of IP40 or higher rating is required, use the sideboard (sold separately), or put the unit inside a panel that has an IP40 or higher protective structure.

■ Cautions regarding Installation

- Take space 50 mm above and below, 50 mm to the left and right, and 80 mm to the front, **as space for removal, wiring, and maintenance**. Also, do not install this device close to electric power devices or other sources of heat.

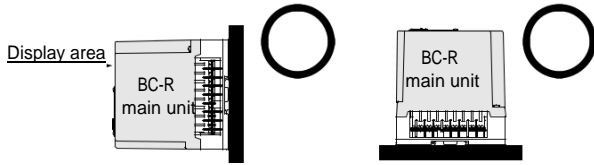


- This device must install within a grounded and conductive control panel to ensure safety.
- Do not pull the wiring while it is attached to the device. Doing so can cause failures of the connectors or this device itself.

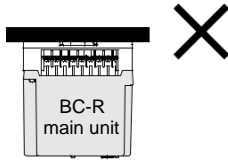


■ Installation Orientation

Attach the unit in the orientation shown below.

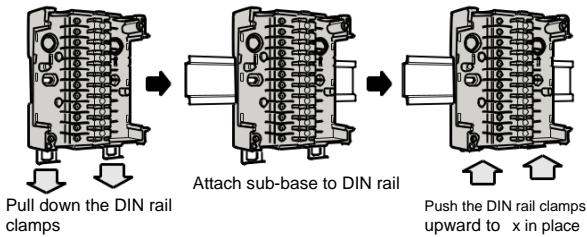


Do not install it in the orientations illustrated below.



■ Mounting on DIN Rail

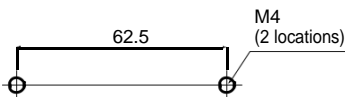
- (1) Pull down the sub-base's DIN rail clamps.
- (2) Attach to the DIN rail while checking above and below the sub-base.
- (3) Push up the DIN rail clamps to attach the sub-base (sold separately) to the DIN rail.



■ Mounting in a Panel

- (1) Drill two M4 screw holes into the panel.

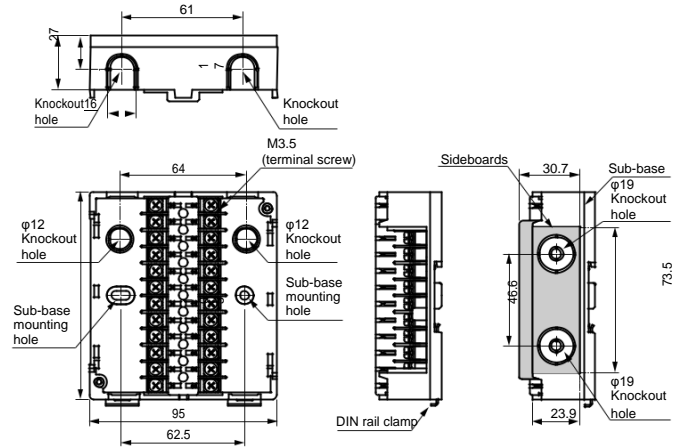
(Units: mm)



- (2) Use screws to mount the sub-base on the panel. (Maximum tightening torque: 1.2N · m)

EXTERNAL DIMENSION

(Units: mm)



! Handling Precautions

- Be sure to tighten the terminal screw (maximum tightening torque: 0.5N · m)

SPECIFICATION

Item	Description
Model Number	BC-R05A100
Weight	Approximately 200 g
Ambient temperature	-20 to +60 °C
Sold separately	Sideboard Model No.: 81447515-001
Material	Denatured PPE resin (black) UL94-V0 PTI250 Material group III a
Wiring types	Refer to each BC-R instruction manual
Vibration (transport)	0 to 9.8 m/s ² (10 to 150 Hz 1 octave/min 10 cycle xyz each direction)
Shock (transport)	0 to 300 m/s ²
Package drop	60 cm drop height (free drop onto 1 corner, 3 edges, 6 sides)