



บริษัท เอดีดี เฟอร์เนส จำกัด

ADD FURNACE CO.,LTD.

44 ซอยบรมราชชนนี 70 ถนนบรมราชชนนี แขวงศาลาธรรมสพน์ เขตทวีวัฒนา กรุงเทพฯ 10170

โทร: 02-888-3472 โทร: ออกแบบ:08-08-170-170 แฟกซ์: 02-888-3258

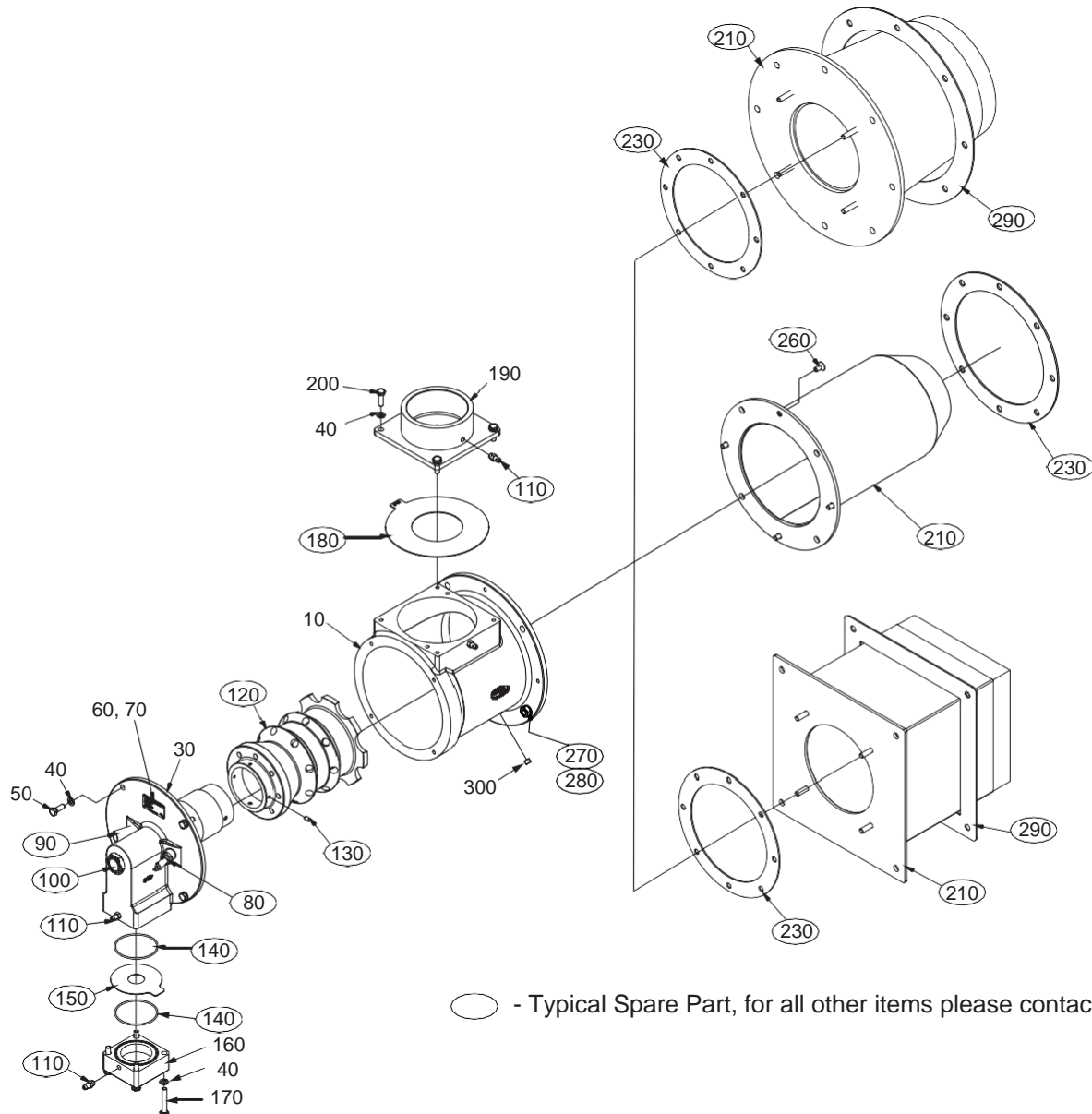
https://www.add-furnace.com E-mail: sales@add-furnace.com

Eclipse ThermJet Burners

Model TJ0300

Spare Parts List Edition 5.16

Version 2





บริษัท เอดีดี เฟอร์เนส จำกัด

ADD FURNACE CO.,LTD.

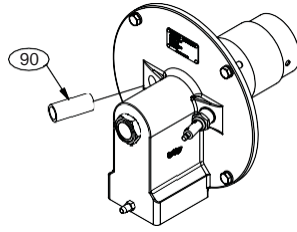
44 ซอยบรมราชชนนี 70 ถนนบรมราชชนนี แขวงศาลาธรรมสพน์ เขตทวีวัฒนา กรุงเทพฯ 10170

โทร: 02-888-3472 โทร: ออกแบบ:08-08-170-170 แฟกซ์: 02-888-3258

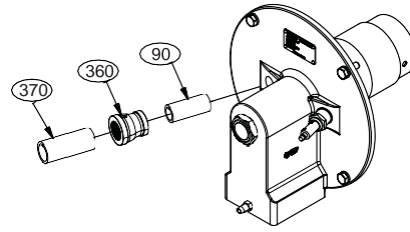
https://www.add-furnace.com E-mail: sales@add-furnace.com

ThermJet TJ0300, V2, Spare Parts List, Edition 5.16

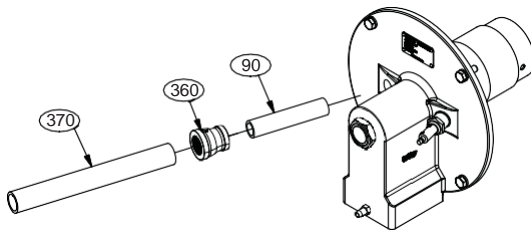
ECLIPSE



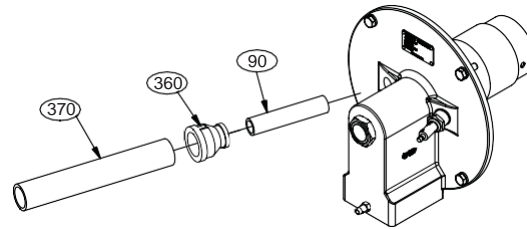
1/2" UV SCANNER OPTION



3/4" UV SCANNER OPTION



EXTENDED 3/4" UV SCANNER OPTION



EXTENDED 1" UV SCANNER OPTION

Ref	Part Number	Description
80	23045	Spark Plug
90	18727	UV Scanner Adapter (Extended)
90	18720	UV Scanner Adapter
100	13225	Peepsight
110	13445	Pressure Tap
120	7038-1	Nozzle, Cast Iron
120	7128-1	Nozzle, Stainless Steel
130	15885	Set Screw M6 x 10
130	10024356	Stainless Set Screw M6 x10
140	14778	O-ring
150	14188-3	Orifice Plate, Natural Gas, 29.0 mm
150	14188-19	Orifice Plate, Propane, 22.5 mm
150	14188-19	Orifice Plate, Butane, 22.5 mm
180	10039-1	Orifice Plate, Air, 90.0 mm
210	10025753	Down Fired Block and Holder HV
210	10025754	Down Fired Block and Holder MV
210	10046045	Block and Holder, HV
210	10046020	Block and Holder, MV
210	108721	Combustor, Alloy, HV
210	108721-1	Combustor Alloy, MV
230	10027	Gasket, Mounting
260	10001	Screw FH M8 x 16mm
270	15890	Block and Holder M10 lock washer
280	15889	Block and Holder M10 nut
290	10025704	Gasket Down Firing Block to Chamber
290	15242	Gasket Block and Holder to Chamber
360	19307	UV Scanner Coupling 3/4" NPT
360	112REB	UV Scanner Coupling 1" NPT

Ref	Part Number	Description
370	18742	UV Scanner Adapter 3/4" NPT
370	20466	UV Scanner Adapter 3/4" NPT Extended
370	19546	UV Scanner Adapter 1" NPT

Note: If replacing the flame tube or combustion block (210), it is also recommended to replace the nozzle (120) at the same time.