



บริษัท เอดีดี เฟอร์เนส จำกัด

ADD FURNACE CO.,LTD.

44 ซอยบรมราชชนนี 70 ถนนบรมราชชนนี แขวงศาลาธรรมสพน์ เขตทวีวัฒนา กรุงเทพฯ 10170

โทร: 02-888-3472 โทร: ออกแบบ:08-08-170-170 แฟกซ์: 02-888-3258

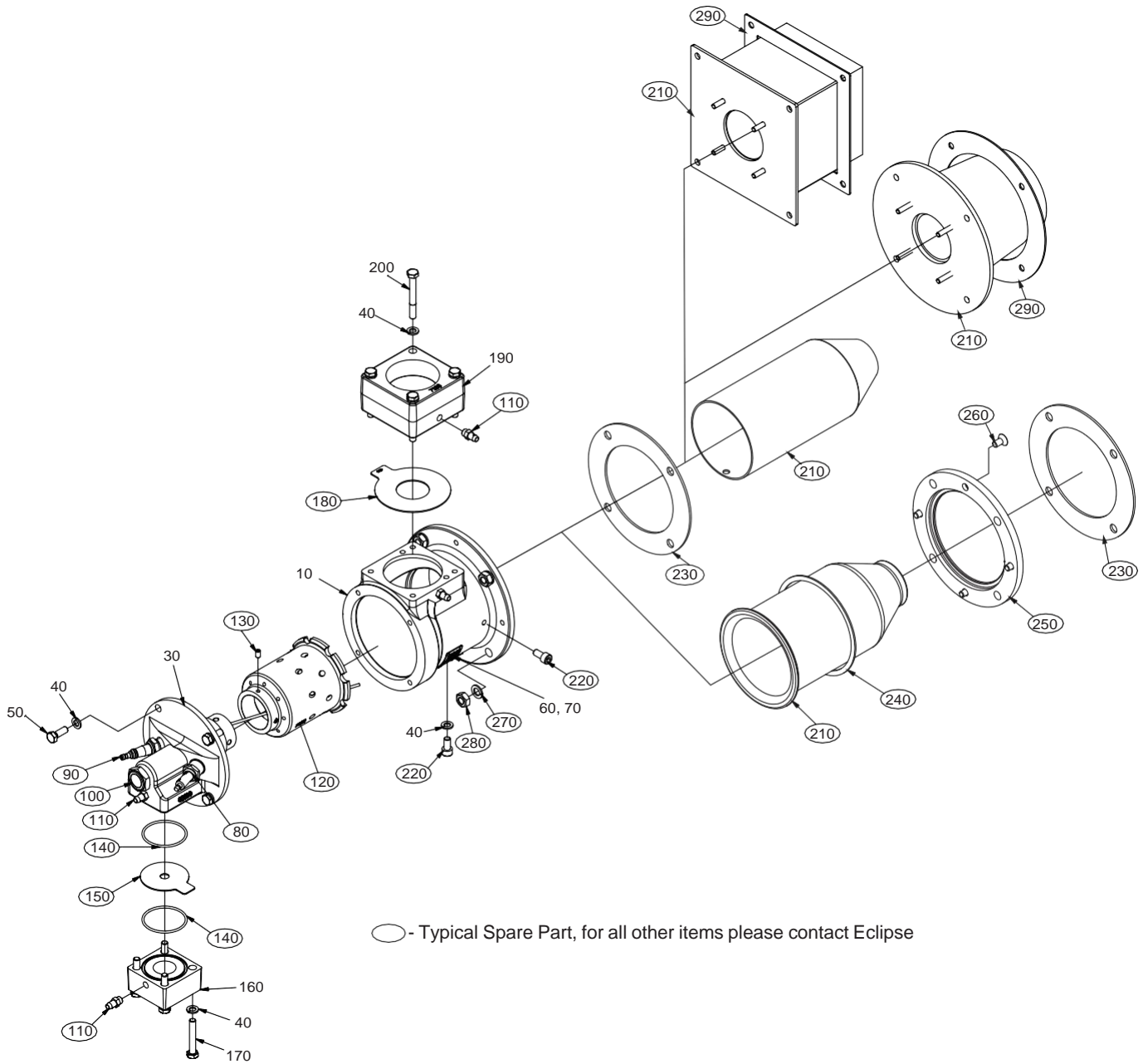
https://www.add-furnace.com E-mail: sales@add-furnace.com

Eclipse ThermJet Burners

Model TJ0050

Spare Parts List Edition 5.16

Version 2



elster
Thermal Solutions



บริษัท เอดีดี เฟอร์เนส จำกัด

ADD FURNACE CO.,LTD.

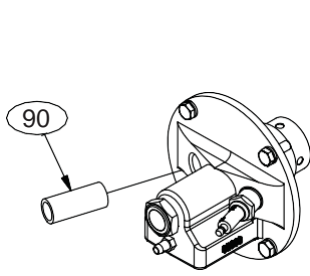
44 ซอยบรมราชชนนี 70 ถนนบรมราชชนนี แขวงศาลาธรรมสพน์ เขตทวีวัฒนา กรุงเทพฯ 10170

โทร: 02-888-3472 โทร: ออกแบบ:08-08-170-170 แฟกซ์: 02-888-3258

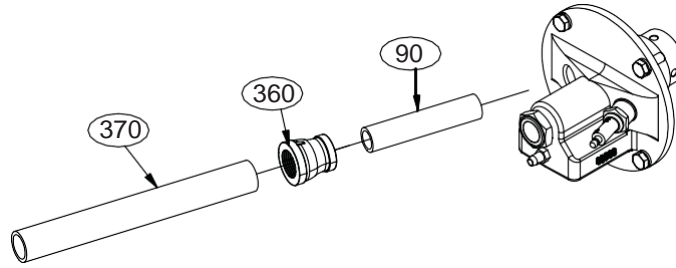
https://www.add-furnace.com E-mail: sales@add-furnace.com

ThermJet TJ0050, V2, Spare Parts List, Edition 5.16

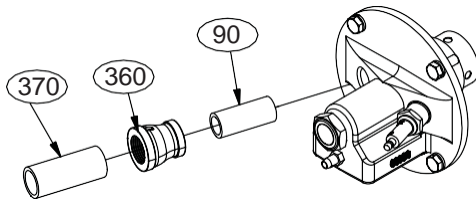
ECLIPSE



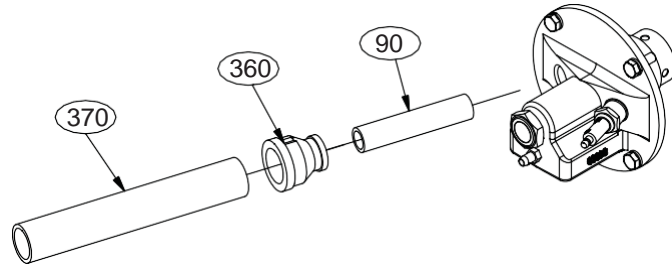
1/2" UV SCANNER OPTION



EXTENDED 3/4" UV SCANNER OPTION



3/4" UV SCANNER OPTION



EXTENDED 1" UV SCANNER OPTION

Ref	Part Number	Description
80	10019728	Spark Plug
90	18720	UV Scanner Adapter
90	18727	UV Scanner Adapter (Extended)
90	10002242-1	Flamerod
100	10509	Peepsight
110	13445	Pressure Tap
120	7133-1	Nozzle, Cast Iron
120	7126-1	Nozzle, Stainless Steel
120	10026923	Nozzle for Flamerod, Cast Iron
120	10026929	Nozzle for Flamerod, Stainless
130	15885	Set Screw M6 x 10
130	10024356	Stainless Set Screw M6 x 10
140	17037	O-ring
150	14934-17	Orifice Plate, Natural Gas, 11.5 mm
150	14934-13	Orifice Plate, Propane, 8.5 mm
150	14934-12	Orifice Plate, Butane, 8.0 mm
180	20362-5	Orifice Plate, Air, 42.0 mm
210	10025763	Down Fired Block and Holder HV
210	10025761	Down Fired Block and Holder MV
210	10042615	Block and Holder, HV
210	10046051	Block and Holder, MV
210	21793-2	Combustor, SiC HV
210	21793-1	Combustor, SiC MV
210	21747-2	Combustor, Alloy HV
210	21747-1	Combustor, Alloy MV
220	16022	Screw M8 x 16

Ref	Part Number	Description
230	20422	Gasket, Mounting
240	10005080	Silicon Carbide Gasket
250	20464	Retaining Ring, SiC
260	10001	Screw FH M8 x 16mm
270	15890	Block and Holder M10 lock washer
280	15889	Block and Holder M10 nut
290	10025707	Gasket Down Firing block to Chamber
290	15220	Gasket Block and Holder to Chamber
360	19307	UV Scanner Coupling 3/4" NPT
360	112REB	UV Scanner Coupling 1" NPT
370	18742	UV Scanner Adapter 3/4" NPT
370	20466	UV Scanner Adapter 3/4" NPT Extended
370	19546	UV Scanner Adapter 1" NPT

Note: If replacing the flame tube or combustion block (210), it is also recommended to replace the nozzle (120) at the same time.