



บริษัท เอดีดี เฟอร์เนส จำกัด

ADD FURNACE CO.,LTD.

44 ซอยบรมราชชนนี 70 ถนนบรมราชชนนี แขวงศาลาธรรมสพน์ เขตทวีวัฒนา กรุงเทพฯ 10170

โทร: 02-888-3472 โทร: ออกแบบ:08-08-170-170 แฟกซ์: 02-888-3258

https://www.add-furnace.com E-mail: sales@add-furnace.com

<<Contents>> <<Index>>

General

YSS1000

Specifications

Setting Software

YS1000 Series

Functional
Enhancement

GS 01B08K02-01EN

■ GENERAL

The YSS1000 setting software (hereinafter referred to as the YSS1000) is package software to configure the functions of the YS1000 series (hereinafter referred to as the YS1000) devices. Writing and reading of parameters and user programs of the YS1000, and PID tuning and monitoring of user programs can be performed through the use of communication.

■ FEATURES

Parameter Setting Function:

A function to set parameters of the YS1000. Functions can be configured, and PID parameters, linearizer function table, scale, and constants can be set.

User Program Creation Function:

A function to create user programs of the YS1700. Programs can be created by selecting either function block programming or text programming.

Text programming enables programs to be created by describing operation commands in text format (Com-patible with YS170). Function block programming enables user programs to be created by graphically linking modules.

Event Indicating Function:

A function to display a pop-up window with a message on the operation display of the YS1000 when an alarm is generated on the YS1000. This function is enabled by setting a parameter to trigger event indication and an indication message. (This function cannot be set on the YS1000.)

Japanese, English, and Chinese etc. fonts can be used to display event messages.

Communication Function:

Parameters and user programs can be written to the YS1000, and parameters and user programs stored in the YS1000 can be read out.

Note: Writing to the YS1000 can be performed only when the operation status is stop. (Reading can be performed without the need to stop operation.)

Tuning Function:

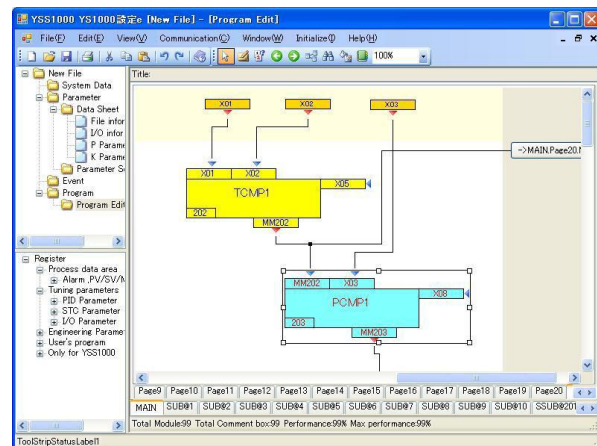
A function to adjust PID parameters of the YS1700 and YS1500 controllers. PID parameters can be set while viewing the PV, SV, and MV trend graphs through the use of communication.

User Program Monitoring Function:

Selected parameters can be monitored while communicating with the YS1700. When function block programming is selected, the input and output values of modules can be monitored on the function block screen.

File Management Function:

Set data such as parameters and user programs can be saved to a PC, and saved data can be read out from a PC.



Print Function:

Parameters and user programs can be printed with a printer connected to a PC.

YS100 Data Conversion Function :

A function to convert the data of the YS100 series to that of the YS1000. Parameters and user programs can be read out from the YS100 and converted to the data of the YS1000 (user programs are converted to text format). Furthermore, parameters and user programs created with the YSS10 and YSS20 program creation packages for the YS100 series can be converted to the data of the YS1000. Converted data can be manipulated as YSS1000 data; for example, edited, saved as files, printed, and written to the YS1000.

YS100 to YS1000 Data Conversion List

Data can be converted according to the conversion table below.

| Model before Conversion (YS100 Series) | → | Model after Conversion (YS1000 Series) |
|---|---|---|
| YS170 | → | YS1700 |
| YS150 | → | YS1500 |
| YS131 | → | YS1310 |
| YS135 | → | YS1350 |
| YS136 | → | YS1360 |

SLPC Data Conversion Function :

A function to convert the data of the SLPC to that of the YS1700. Parameters and user programs are read out from the user ROM of the SLPC and converted to the data of the YS1700 (user programs are converted to text format). Converted data can be manipulated as YSS1000 data; for example, edited, saved as files, printed, and written to the YS1700.



Check Support Function:

This function indicates check procedures for main-tenance person by showing Check Operation Guide windows on the YSS1000 screen.

The check result can be recorded in the internal mem-ory of the YS1000 series or saved in the PC. It can be printed on reported format.

Main check items

- Input / output check(X,Y,DI,DO)
- Display function check(LCD, LED, operation KEY)
- Hard manual function check
- Record of Model name, serial number, check date, checker

■ OPERATING ENVIRONMENT

OS:

- Windows 7 Professional (32bit/64bit)
- Windows 8.1 Pro (32-bit/64-bit versions for Desktop)
- Windows 10 Pro (64-bit versions)
- Supported OS languages are English and Japanese.

Supported Languages:

- Languages that can be inputted in the comment and title fields
- Japanese OS: English and Japanese
- English OS: English
- Chinese OS: Chinese and English

CPU:

- Pentium4 processor, 3.0GHz or higher or Core2Duo Processor, 1.8GHz or higher recommended

Main memory capacity:

- 2GB or more

Hard Drive Capacity:

- Package program storage: 100MB or more

Display:

- 1024 x 768 pixels or more
- Font: Small font
- Color: 256 or more colors

Network:

The Internet connection environment is required when installing.

Printer:

Required for printing, support for letter or A4 size **Communication Specifications**

Three connection methods available: USB connec-tion (using a exclusive cable), RS485 connection, and Ethernet connection.

USB Connection

The USB port on a PC and the communication port inside the front panel of the YS1000 can be con-nected with a exclusive cable. (A1053UR) PC specification: USB1.1

Ethernet Connection

The Ethernet port on a PC and the Ethernet port on the back panel of the YS1000 can be connected with an Ethernet cable.

Specification: IEEE802.3 compliant 10BASE-T/100BASE-TX

RJ45 connector

For a connection via a hub: Straight cable

For a direct connection: Cross cable

RS485 Connection

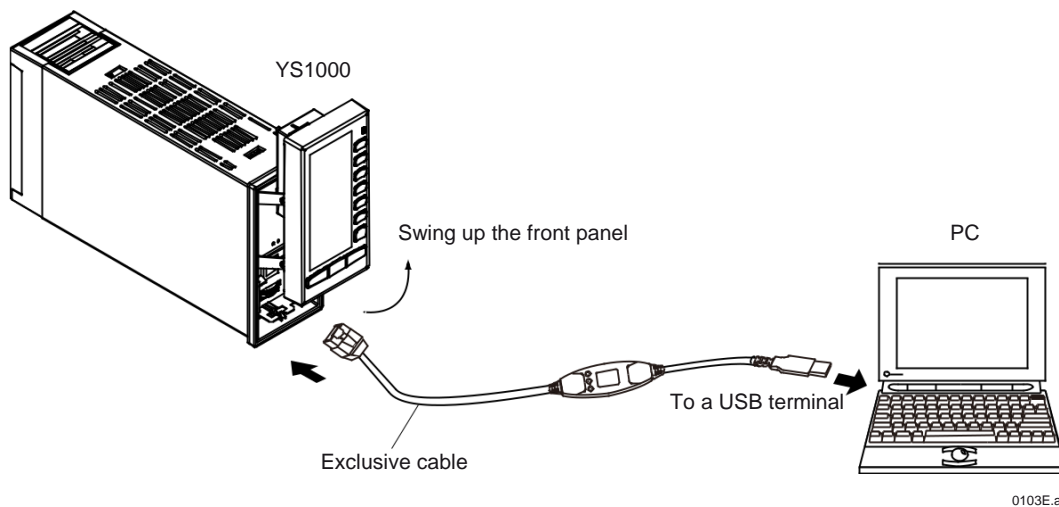
RS485 communication is possible via the RS485 communication terminal on the back panel of the YS1000.

Specification: EIA RS485 compliant

■ CONNECTION METHODS

USB Connection

Connect the exclusive cable to the inside panel at the bottom of the front panel of the YS1000.



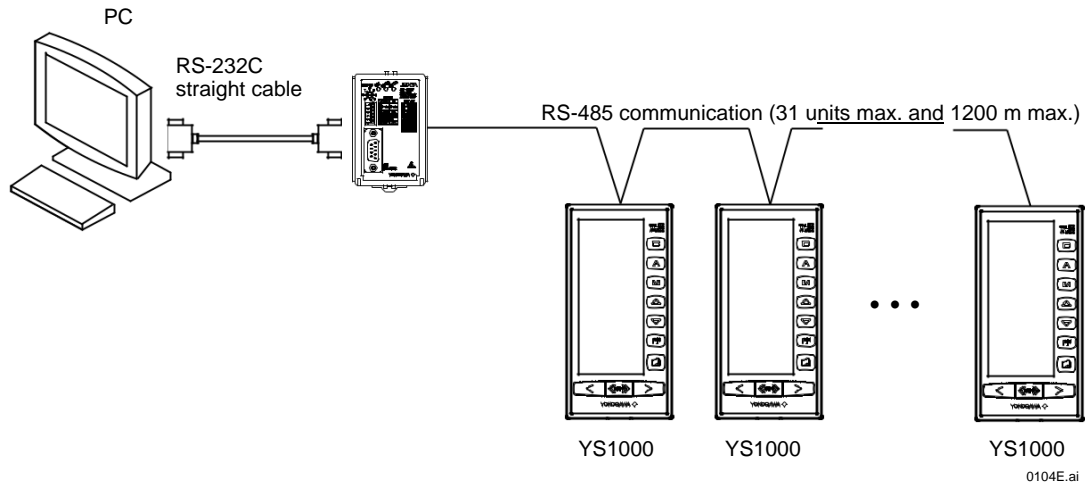
Note: The communication port inside the front panel of the YS1000 is incorporated into the YS1000 as standard.



<<Contents>> <<Index>>

RS485 Connection

RS485 communication is possible via the RS485 communication terminal on the back panel of the YS1000.

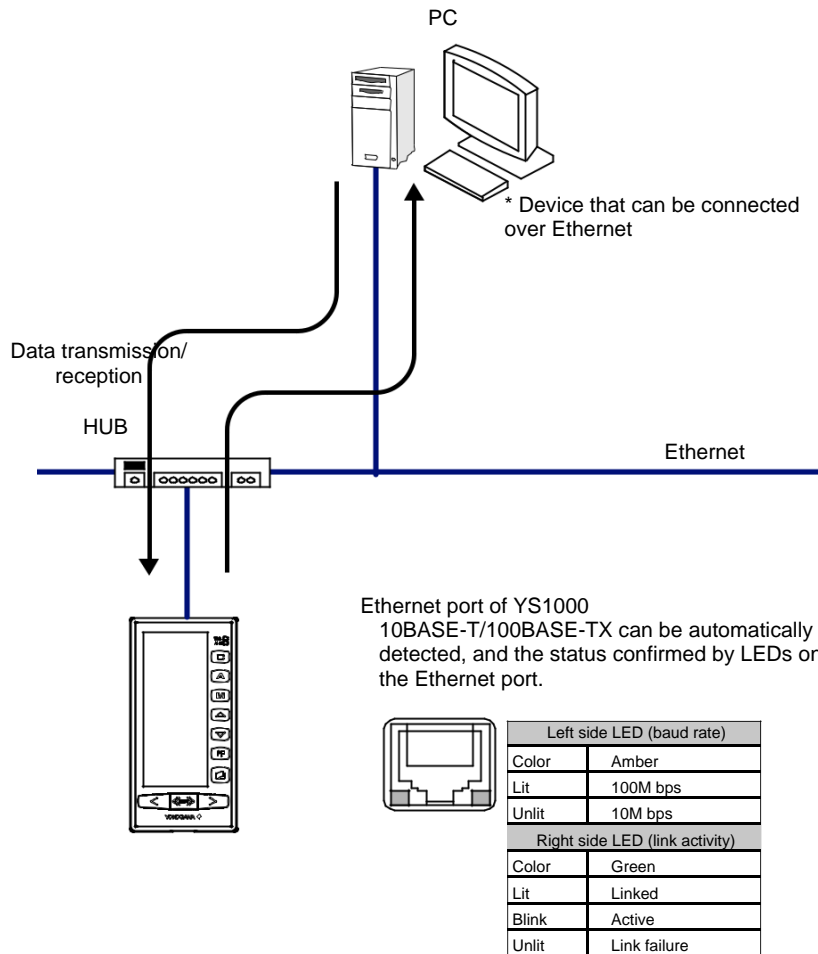


Note: The RS485 option (/A31) is required for the YS1000.

Furthermore, an RS485 communication device is required for the PC. When using the RS232C port on the PC, we recommend Yokogawa's ML2 RS485/RS232C converter.

Ethernet Connection

The Ethernet port on the PC and the Ethernet port on the back panel of the YS1000 can be connected with an Ethernet cable.



Ethernet port of YS1000
10BASE-T/100BASE-TX can be automatically detected, and the status confirmed by LEDs on the Ethernet port.

0105E.ai

Note: The Ethernet option (/A34) is required for the YS1000.



■ SUPPORTED MODELS

The YSS1000 can be used for all of the following YS1000 series models.

✓ :
Available

| Supported Models | Parameter Setting | Event Indicating Setting | Tuning | User Program Creation & Monitoring |
|---|-------------------|--------------------------|--------|------------------------------------|
| YS1700 Programmable Indicating controller | ✓ | ✓ | ✓ | ✓ |
| YS1500 Indicating controller | ✓ | ✓ | ✓ | N/A |
| YS1360 Manual setter for MV setting | ✓ | ✓ | N/A | N/A |
| YS1350 Manual setter for SV setting | ✓ | ✓ | N/A | N/A |
| YS1310 Indicator with alarm | ✓ | ✓ | N/A | N/A |

■ MODEL & SUFFIX CODE

| Model | Suffix Code | Description |
|---------|-------------|--|
| YSS1000 | | Setting software (for the YS1000 series) |
| | -0 | Always 0 |
| | 0 | Always 0 |

Package Contents:

Connection cable: Exclusive cable for YS1000 connection (A1053UR)

Manuals: Installation Manual (A4 paper)

* Product user's manuals can be downloaded or viewed at the following URL. To view the user's manual, you need to use Adobe Reader 7 or later by Adobe Systems.

<http://www.yokogawa.com/ns/ys/im/>

YSS1000 Setting Software:

Download the latest version of the software from the following

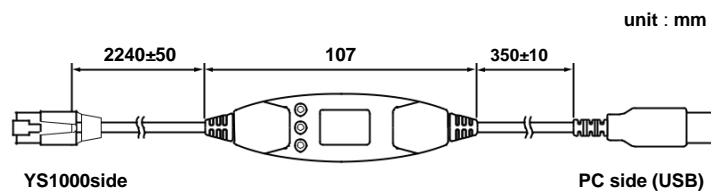
URL: <http://www.yokogawa.com/ns/yss1000/download/>

■ ITEMS TO BE SPECIFIED WHEN ORDERING

Model and suffix code.

YSS1000-00

■ Cable outline view



EMC Standards: EN61326-1 Class A Table 2 (For use in industrial location)

EN55011 Class A Group 1

KC marking: Electromagnetic wave interference prevention standard, electromagnetic wave protection standard compliance

EMC Regulatory Arrangement in Australia and New Zealand: EN55011 compliant, Class A, Group 1

WEEE Directive: Compliant

Trademarks

* Windows 7, Windows 8.1 and Windows 10 are registered trademarks of Microsoft Corporation in the United States.

* All other product names and company names are trademarks or registered trademarks of their respective holders.



■ Operation confirmed ROM Writer

Product name : The universal programmer MODEL1882, MODEL1883

Manufacturer: MINATO HOLDINGS INC.

4105 Minami Yamada-cho Tsuzuki-ku, Yokohama, 224-0026

Japan Phone: 81-45-592-5549

Fax: 81-45-592-2854

e-mail: int-support@minato.co.jp

URL: <http://www.minato.co.jp/en/index.html>

Distributors

<http://www.minato.co.jp/en/orderinfo/index.html>

Price: Open price

* For Operating condition, please contact MINATO HOLDINGS INC..

■ SLPC data exchange diagram

Overview of SLPC ROM Data Conversion

