



บริษัท เอดีดี เฟอร์เนส จำกัด

ADD FURNACE CO.,LTD.

44 ซอยบรมราชชนนี 70 ถนนบรมราชชนนี แขวงศาลาธรรมสพน์ เขตทวีวัฒนา กรุงเทพฯ 10170

โทร: 02-888-3472 โทร: ออกแบบ:08-08-170-170 แฟกซ์: 02-888-3258

https://www.add-furnace.com E-mail: sales@add-furnace.com



fives north american

## AIR/GAS RATIO REGULATORS

Bulletin 7218/7219A

April 2013

**7218 and 7219A REGULATORS** accurately maintain a constant air/gas ratio over a wide range of firing rates in both nozzle-mix and premix gas burner systems. Molded diaphragms ensure excellent tracking, repeatability, maximum flows, and superior turndown.

### NOZZLE-MIX BURNERS

When used with nozzle-mix burners, the vent of a 7218 Regulator is cross-connected to the main air line downstream of the control valve. Regulator outlet pressure then equals air impulse pressure, and gas flow remains proportional to air flow at all firing rates.

One regulator can be used for several burners controlled by the same air valve, but often it is better to have a separate regulator for each burner.

**Dual-Fuel Burners.** When a dual-fuel burner's atomizing air is left on during gas operation, the 7218 Regulator can be set to compensate for the extra air over the controlled main air by adjusting the spring for up to 1 osi "leak" with no impulse pressure.

### PREMIX BURNERS

With its vent open to atmosphere, a 7218 Regulator can be used as an atmospheric regulator (zero governor) to supply gas to an aspirator mixer feeding premix burners.

If burner nozzles are sealed-in and furnace pressure is other than atmospheric, regulator vent must be connected to the combustion chamber. Controlled gas pressure then will match furnace pressure; this is necessary to maintain the same air/gas ratio at all firing rates. (See Instructions 7218-2.)

A separate regulator for each mixer is preferred to avoid interference or interaction.



7218 Regulators have soft seat for low flow control.

### 7219A

**7219A Regulators** are modified **7218 Regulators** (7218 regulators have internal pressure sensing), with provision for remote downstream pressure sensing. The 7219A is used to sense downstream pressure at a point closer to burner or mixer. The downstream pressure sensing connection is made in the field.

## SPECIFICATIONS

**Diaphragm Cover and Case:** Aluminum

**Body:** Cast Iron

**Seat:** SST

**Shaft:** SST

**Balancing Diaphragm:** BUNA/Nylon (Standard)  
FKM/Polyester (7218-V)

**Gas Diaphragm:** BUNA/Nylon (Standard)  
FKM/Nomex (7218-V)

**Maximum Inlet Pressure:** 2 psi

**Maximum Shock Load:** 5 psi

**Maximum Ambient Temperature:** 180° F (Standard)  
350° F (7218-V)

**Minimum Ambient Temperature:** -20° F (standard and -V)

**Low Fire Accuracy at <3"wc impulse:**

Spring bias setting capabilities: -0.2"wc to +1.7"wc  
Repeatability: ±0.05"wc

**High Fire Accuracy at 3" to 41.5"wc impulse:**

Impulse/outlet pressure offset: 0.5 to 5%  
Repeatability: ±0.3"wc

**Turndown:** Exceeds 20:1

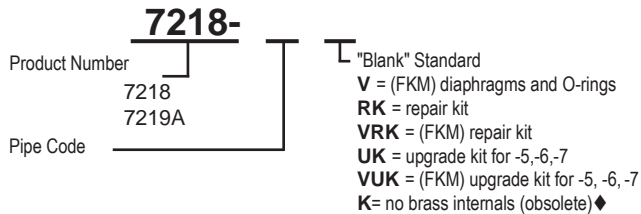


## 7218/7219A AIR/GAS RATIO REGULATORS

### REGULATOR SELECTION

To size a regulator, determine required cfh of gas and pressure drop available at high fire. Divide required cfh by Table 2 Factor for available pressure drop. Select smallest regulator with Table 1 (2 osi) capacity above this adjusted capacity. **Never choose a regulator capacity based on more than 16 osi drop (even if more is available).**

### ORDERING INSTRUCTIONS



### SIZING EXAMPLES

A nozzle-mix system requires 5000 cfh of natural gas. Gas inlet pressure is 12 osi; maximum air pressure at the burner is 8 osi.

When cross-connected, outlet gas pressure is 8 osi at high fire; pressure drop across regulator is 12 – 8 = 4 osi. Table 2 factor for 4 osi is 1.41; 5000 cfh ÷ 1.41 = 3546 cfh. In the 0.6 sp gr column of Table 1, select a 7218-4 Regulator (rated at 4800 cfh.)

If air pressure at the burner was 16 osi but available gas pressure was still only 12 osi, a bleeder would be required in the cross connection. For minimum bleed†, select regulator for required cfh directly from Table 1 (2 osi) capacities; then bleed cross-connected air impulse at high fire from 16 osi to 10 osi (12 osi available gas pressure minus 2 osi drop through regulator). For the required 5000 cfh in this example, select a 7218-5 from Table 1.

If system was premix instead of nozzle-mix, regulator outlet pressure is zero, and pressure drop through the regulator would equal inlet gas pressure (12 osi). Table 2 factor is 2.45; 5000 ÷ 2.45 = 2040 cfh. Select a 7218-3 Regulator from Table 1.

† Minimum bleed is desirable to realize highest possible impulse pressure for widest possible turndown.

◆ The "Standard" regulator now comes with no brass internals, and can be used in place of the obsolete - K model

Table 1. CAPACITIES

scfh  
MAXIMUM WIDE OPEN  
with 2 osi drop through regulator  
and 2 psig inlet pressure

Regulator designation	gas gravity	
	0.6	1.5
7218-01	285	180
7218-0	540	341
7218-1	700	442
7218-2	1730	1090
7218-3	2800	1770
7218-4	4800	3030
7218-5	6900	4360
7218-6	9100	5750
7218-7	17600	11120

(For capacities at other drops, use square root law or Table 2 below.)

Table 2. FACTORS

for capacities at various pressure drops

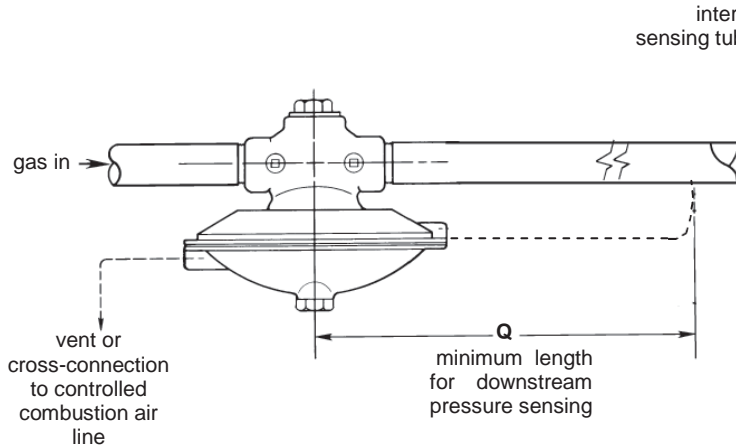
Pressure drop, osi	Factor	Pressure drop, osi	Factor
1	0.707	8	2.00
2	1.00	10	2.24
2½	1.12	12	2.45
3	1.22	14	2.65
4	1.41	16	2.83
6	1.73		

### REPAIR and UPGRADE KITS

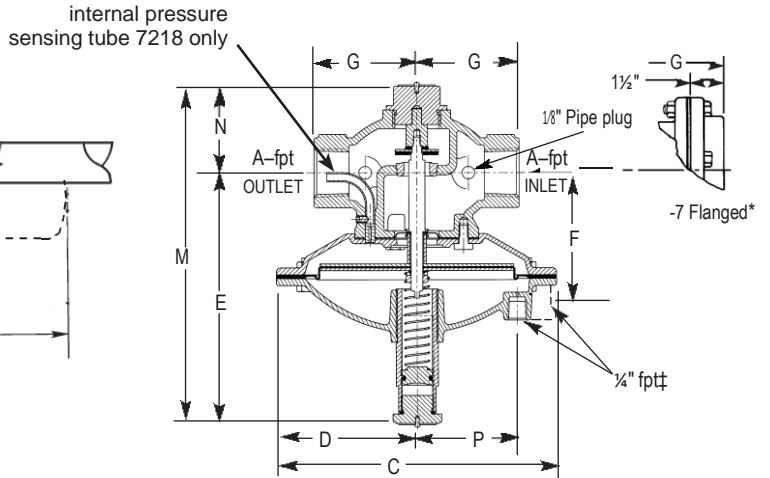
For repair and upgrade kits see:  
Sheet 7216/7218/7219A/7349A.



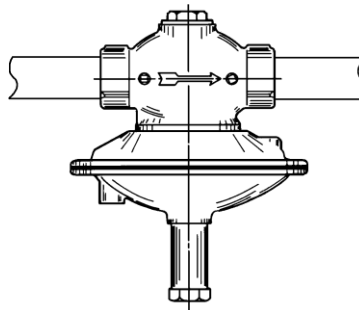
FIELD PIPING FOR 7219A REGULATOR



7218/7219A REGULATOR



Install 7218/7219A Regulators with diaphragm horizontal and below the pipe.



Regulator designation	dimensions in inches										wt, lb
	A	C	D	E	F	G	M	N	P	Q	
7218-01, 7219A-01	½	7½	3¼	67/8	—	2½	91/8	2¼	211/16	65/8	7.5
7218-0, 7219A-0	¾	7½	3¼	67/8	—	2½	91/8	2¼	211/16	65/8	7.5
7218-1, 7219A-1	1	7½	3¼	67/8	—	2¾	95/16	27/16	211/16	87/8	8
7218-2, 7219A-2	1¼	10½	5¼	529/32	—	2¾	829/32	3	315/16	9¾	12
7218-3, 7219A-3	1½	10½	5¼	529/32	—	31/16	91/32	31/8	315/16	113/8	13
7218-4, 7219A-4	2	13½	6¾	73/16	—	35/16	109/16	33/8	5¼	13½	17
7218-5, 7219A-5	2½	18½	9¼	1125/32	67/16	4½	1525/32	4	—	17	38
7218-6, 7219A-6	3	18½	9¼	1125/32	67/16	413/16	169/32	4½	—	20¼	40
7218-7*, 7219A-7*	4	18½	9¼	129/32	71/8	821/32	181/32	5¼	—	24	84

\* Threaded companion flanges included.

‡ For proper size impulse pipe, see paragraph A7 on Instructions 7218-2.

DIMENSIONS SHOWN ARE SUBJECT TO CHANGE. PLEASE OBTAIN CERTIFIED PRINTS FROM FIVES NORTH AMERICAN COMBUSTION, INC. IF SPACE LIMITATIONS OR OTHER CONSIDERATIONS MAKE EXACT DIMENSION(S) CRITICAL.

**WARNING:** Situations dangerous to personnel and property may exist with the operation and maintenance of any combustion equipment. The presence of fuels, oxidants, hot and cold combustion products, hot surfaces, electrical power in control and ignition circuits, etc., are inherent with any combustion application. Parts of this product may exceed 160F in operation and present a contact hazard. Fives North American Combustion, Inc. urges compliance with National Safety Standards and Insurance Underwriters recommendations, and care in operation.