



SIRIUS POSITION SWITCH METAL ENCLOSURE 40MM ACC. TO EN50041 DEVICE CONNECTION 1X (M20X1.5) 1NO/1NC SNAP-ACTION CONTACTS ROUNDED PLUNGER W. 3MM OVER-TRAVEL, STAINLESS STEEL PLUNGER

**Product designation**

standard position switch

**Manufacturer article number**

- of the supplied basic switch
- of the supplied actuator head for position switches
- of the supplied switching contacts
- of the supplied empty enclosure with cover

[3SE5112-0CA00](#)[3SE5000-0AC02](#)[3SE5000-0CA00](#)[3SE5112-0AA00](#)**General technical data:**

<b>Product function</b> <ul style="list-style-type: none"><li>• positive opening</li></ul>	Yes
<b>Insulation voltage</b> <ul style="list-style-type: none"><li>• Rated value</li></ul>	400 V
<b>Degree of pollution</b>	class 3
<b>Shock resistance</b> <ul style="list-style-type: none"><li>• acc. to IEC 60068-2-27</li></ul>	30 g / 11 ms
<b>Vibration resistance</b> <ul style="list-style-type: none"><li>• acc. to IEC 60068-2-6</li></ul>	0.35 mm/5g
<b>Surge voltage resistance Rated value</b>	6 kV
<b>Mechanical service life (switching cycles)</b> <ul style="list-style-type: none"><li>• typical</li></ul>	15 000 000
<b>Electrical endurance (switching cycles)</b> <ul style="list-style-type: none"><li>• at AC-15 at 230 V typical</li></ul>	100 000
<b>Electrical endurance (switching cycles) with contactor 3RH11, 3RT1016, 3RT1017, 3RT1024, 3RT1025, 3RT1026 typical</b>	10 000 000



Electrical operating cycles in one hour with contactor 3RH11, 3RT1016, 3RT1017, 3RT1024, 3RT1025, 3RT1026	6 000
Thermal current	6 A
Material of the enclosure of the switch head	metal
Protection class IP	IP66/IP67
Equipment marking <ul style="list-style-type: none"><li>• acc. to DIN EN 61346-2</li><li>• acc. to DIN EN 81346-2</li></ul>	B B
Active principle	mechanical
Repeat accuracy	0.05 mm
Explosion protection category for dust	none
Explosion protection category for gas	none
Minimum actuating force in activation direction	20 N
Operating current at AC-15 <ul style="list-style-type: none"><li>• at 230 V Rated value</li><li>• at 400 V Rated value</li></ul>	6 A 4 A
Operating current <ul style="list-style-type: none"><li>• at DC-13 at 125 V Rated value</li><li>• at DC-13 at 400 V Rated value</li></ul>	0.55 A 0.1 A
Operating current <ul style="list-style-type: none"><li>• at DC-13<ul style="list-style-type: none"><li>— at 24 V Rated value</li></ul></li></ul>	3 A

## Enclosure:

Design of the housing	block, narrow
Material of the enclosure	metal
Coating of the enclosure	cathodic immersion coating
Design of the housing acc. to standard	Yes

## Drive Head:

Design of the operating mechanism	stainless steel plunger
Standard-compliant actuator head	EN 50041, design B
Shape of the switch head	rounded
Design of the switching function	positive opening

## Connections/ Terminals:

Type of electrical connection	screw-type terminals
Type of connectable conductor cross-section <ul style="list-style-type: none"><li>• solid</li><li>• finely stranded with core end processing</li><li>• finely stranded without core end processing</li><li>• for AWG conductors<ul style="list-style-type: none"><li>— solid</li><li>— stranded</li></ul></li></ul>	1x (0.5 ... 1.5 mm <sup>2</sup> ), 2x (0.5 ... 0.75 mm <sup>2</sup> ) 1x (0.5 ... 1.5 mm <sup>2</sup> ), 2x (0.5 ... 0.75 mm <sup>2</sup> ) 1x (0.5 ... 1.5 mm <sup>2</sup> ), 2x (0.5 ... 0.75 mm <sup>2</sup> )  1x (20 ... 16), 2x (20 ... 18) 1x (20 ... 16), 2x (20 ... 18)



Mechanical data:

Cable entry type 1x (M20 x 1.5)

Communication/ Protocol:

Design of the interface without

Ambient conditions:

Ambient temperature
• during operation -25 ... +85 °C
• during storage -40 ... +90 °C

Installation/ mounting/ dimensions:

mounting position any
Mounting type screw fixing

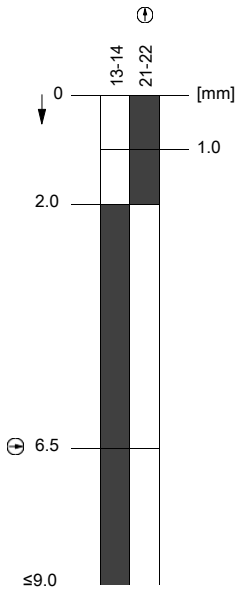
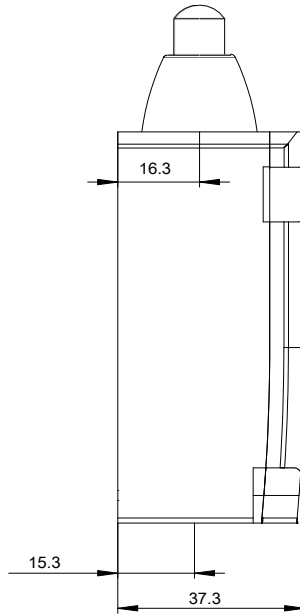
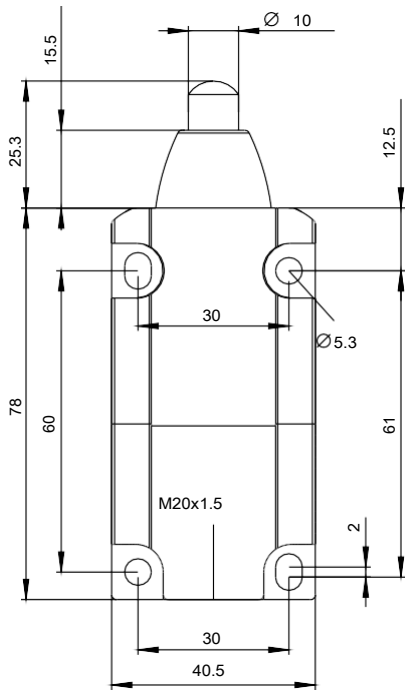
Certificates/ approvals:

Table with 4 columns: General Product Approval, Functional Safety/Safety of Machinery, Declaration of Conformity, Test Certificates. Includes logos for CSA, UL, EAC, CE, and links to Type Examination Certificate and Special Test Certificate.

other
Confirmation

Further information

- Information- and Downloadcenter (Catalogs, Brochures,...)
Industry Mall (Online ordering system)
Cax online generator
Service&Support (Manuals, Certificates, Characteristics, FAQs,...)
Image database (product images, 2D dimension drawings, 3D models, device circuit diagrams, EPLAN macros, ...)



last modified:

27.04.2015